

**■ Mains supply 3 x 380/400/415 V**

According to international VDE and UL/CSA requirements

	VLT type	3502	3504	3505	3508	3511	3516	3522	3532	3542	3552	3562
Output current	$I_{VLT,N}$ [A]	2.8	5.6	7.3	13.0	16.0	24.0	31.9	44.2	61.2	73.2	88.3
	$I_{VLT,MAX}$ (60 s) [A]	3.1	6.2	8.0	14.3	17.6	26.4	35.2	48.4	67.1	80.3	96.8
Output (at 415 V)	$S_{VLT,N}$ [kVA]	2.0	4.0	5.2	9.3	11.5	17.2	22.9	31.8	44.0	52.6	63.5
Typical shaft output	$P_{VLT,N}$ [kW]	1.1	2.2	3.0	5.5	7.5	11.0	15.0	22.0	30.0	37.0	45.0
Max. cable cross-section	[mm <sup>2</sup> ]	2.5	2.5	2.5	2.5	2.5	16.0	16.0	16.0	35.0	35.0	50.0
Max. motor cable length	[m]	300, with screened cables: 150 m <sup>5)</sup>										
Rated motor voltage	$U_{M,N}$ [V]	380/400/415										
Rated motor frequency	$f_{M,N}$ [Hz]	50/60/87/100										
Max. input current	$I_{L,N}$ [A]	2.8	5.6	7.3	13.0	17.0	22.0	31.0	41.5	57.5	66.5	80.0
Max. cable cross-section	[mm <sup>2</sup> ]	2.5	2.5	2.5	2.5	2.5	16.0	16.0	16.0	35.0	35.0	50.0
Max. pre-fuses	[A]	16	16	16	25	25	50	63	63	80	100 <sup>1)</sup>	125 <sup>1)</sup>
Mains contactor <sup>4)</sup>	[Danfoss type]	CI 6	CI 6	CI 9	CI 5	CI 6	CI 9	CI 16	CI 32	CI 32	CI 37	CI 45
	[AC value]	AC-3	AC-3	AC-3	AC-3	AC-1	AC-1	AC-1	AC-1	AC-1	AC-1	AC-1
Supply voltage	[V]	3 x 380/400/415 ±10% (VDE 0160)										
Supply frequency	[Hz]	50/60 Hz										
Power factor / cos. $\phi_1$		0.9/1.0										
Switching on input	times/min.	2										
Power loss at max. load	[W]	60	100	130	280	300	425	580	880	1390	1875	2155
Ambient temperature	[°C]	-10 → +40 at full load <sup>2)</sup>										

**VLT type 3575 3600 3625 3650 3700 3750 3800**

Output current	$I_{VLT,N}$ [A]	105	139	168	205	243	302	368
	$I_{VLT,MAX}$ (60 s) [A]	116	153	185	226	267	332	405
Output (at 415 V)	$S_{VLT,N}$ [kVA]	75.5	99.9	121	147	175	217	265
Typical shaft output	$P_{VLT,N}$ [kW]	55	75	90	110	132	160	200
Max. cable cross-section	[mm <sup>2</sup> ]	70	70	150	150	150	2 x 120	2 x 120
Terminal torque	[Nm]	6	6	10	10	10	6	6
Max. motor cable length	[m]	300						
Rated motor voltage	$U_{M,N}$ [V]	380/400/415/440/460/500						
Rated motor frequency	$f_{M,N}$ [Hz]	50/60/87/100						
Max. input current	$I_{L,N}$ [A]	103.3	138.4	167.2	201.7	241.9	293.3	366.3
	$I_{L,MAX}$ (60 s) [A]	116	153	185	226	267	332	405
Max. cable cross-section	[mm <sup>2</sup> ]	120	120	2 x120	2 x120	2 x120	2 x 240	2 x 240
Terminal torque	[Nm]	31.1	31.1	31.1	31.1	31.1	42	42
Pre-fuses <sup>3)</sup>	[A]	150	150	250	250	300	450	500
Mains contactor <sup>4)</sup>	[Danfoss type]	CI 85	CI 85	CI 140	CI 140	CI 140	-	-
	[AC value]	AC-1	AC-1	AC-1	AC-1	AC-1	-	-
Supply voltage (VDE 0160)	[V]	3 x 380/400/415/440/460/500 ±10%						
Supply frequency	[Hz]	50/60						
Power factor / cos. $\phi_1$		0.9/1.0						
Switching on input	times/min.	1						
Power loss at max. load	Front	529	713	910	1091	1503	1812	2209
	Heat sink	1074	1447	1847	2216	3051	3679	4485
Ambient temperature	[°C]	-10 → +40 at full load <sup>2)</sup>						

<sup>1)</sup> Only semi-conductor fuses

<sup>2)</sup> In the range -10 to 0°C, the equipment can start and run; however, the display values and certain operating characteristics will not fulfil the specifications.

<sup>3)</sup> Bussmann rapid type JJS integrated.

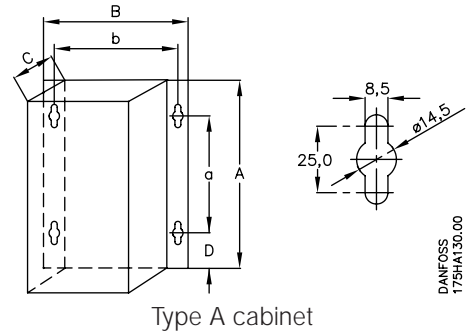
<sup>4)</sup> If mains contactors are used, the following Danfoss types are recommended:  
Max. ambient temperature +40°C

<sup>5)</sup> VLT 3502-3505 fswitch > 4,5 kHz; max. 40 m motor cable.

■ Cabinet sizes of VLT 3500 HV-AC

■ VLT 3502-3532 200 - 230 V

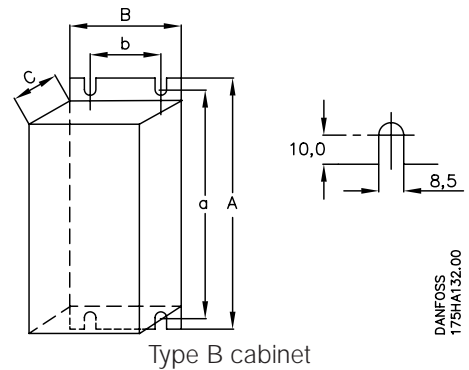
VLT Frequency converter type	Enclosure	A mm	B mm	C mm	D mm	a mm	b mm	Cabinet type
3502	IP 00	300	281	178	55	191	258	A
	IP 21	360	281	178	85	191	258	A
	IP 54	530	281	178	85	330	258	A
3504	IP 00	300	281	178	55	191	258	A
	IP 21	390	281	178	85	191	258	A
	IP 54	530	281	178	85	330	258	A
3508	IP 20	660	242	260	-	640	200	B
	IP 54	810	355	280	70	560	330	A
3511	IP 20	660	242	260	-	640	200	B
	IP 54	810	355	280	70	560	330	A
3516	IP 20	780	242	260	-	760	200	B
	IP 54	810	355	280	70	560	330	A
3522	IP 20	950	308	296	-	930	270	B
	IP 54	940	400	280	70	690	375	A
3532	IP 20	950	308	296	-	930	270	B
	IP 54	940	400	280	70	690	375	A



DANFOSS  
175HA130.00

■ VLT 3502-3562 380 - 415/ 440 - 500 V

VLT Frequency converter type	Enclosure	A mm	B mm	C mm	D mm	a mm	b mm	Cabinet type
3502	IP 00	300	281	178	55	191	258	A
	IP 00 w. RFI*	440	281	178	55	330	258	A
	IP 21	360	281	178	85	191	258	A
	IP 21 w. RFI*	500	281	178	85	330	258	A
3504	IP 00	300	281	178	55	191	258	A
	IP 00 w. RFI*	440	281	178	55	330	258	A
	IP 21	360	281	178	85	191	258	A
	IP 21 w. RFI*	500	281	178	85	330	258	A
3505*	IP 00	300	281	178	55	191	258	A
	IP 00 w. RFI*	440	281	178	55	330	258	A
	IP 21	390	281	178	85	191	258	A
	IP 21 w. RFI*	530	281	178	85	330	258	A
3506**	IP 00	440	281	178	55	330	258	A
	IP 21	500	281	178	85	330	258	A
	IP 54	530	281	178	85	330	258	A
3508	IP 00	440	281	178	55	330	258	A
	IP 21	530	281	178	85	330	258	A
	IP 54	530	281	178	70	330	258	A
3511*	IP 00	500	281	178	55	330	258	A
	IP 21	530	281	178	85	330	258	A
	IP 54	530	281	178	70	330	258	A
3516	IP 20	660	242	260	-	640	200	B
	IP 54	810	355	280	70	560	330	A
3522	IP 20	660	242	260	-	640	200	B
	IP 54	810	355	280	70	560	330	A
3532	IP 20	780	242	260	-	760	200	B
	IP 54	810	355	280	70	560	330	A
3542	IP 20	950	308	296	-	930	270	B
	IP 54	940	400	280	70	690	375	A
3552	IP 20	950	308	296	-	930	270	B
	IP 54	940	400	280	70	690	375	A
3562	IP 20	950	308	296	-	930	270	B
	IP 54	940	400	280	70	690	375	A



DANFOSS  
175HA132.00

\* Only for 380 - 415 V

\*\* Only for 440 - 500 V

■ VLT 3542 - 3562 230 V, 3575 - 3800 380 / 500 V

VLT Frequency converter type	Enclosure	A mm	B mm	C mm	a mm	b mm	D mm	Floor installation on base mm	Wall installation above/below mm	Floor installation on base left/right (mm)	Wall installation left/right (mm)	Cabinet type
3542-3562 (230 V)	IP 21	954 <sup>1</sup>	506 <sup>3</sup>	353	851	446	25	-	170	-	25 <sup>5</sup>	C
	IP 54	954 <sup>1</sup>	506 <sup>3</sup>	376	851	446	25	-	170	-	25 <sup>5</sup>	C
3575-3600	IP 21	954 <sup>1</sup>	506 <sup>3</sup>	353	851	446	25	-	170	-	25 <sup>5</sup>	C
	IP 54	954 <sup>1</sup>	506 <sup>3</sup>	376	851	446	25	-	170	-	25 <sup>5</sup>	C
3625-3700	IP 21	1569 <sup>1</sup>	513 <sup>3</sup>	394	1453	432	31	230	230	130	25 <sup>5</sup>	C
		1696 <sup>2</sup>										
	IP 54	1569 <sup>1</sup>	1696 <sup>2</sup>	513 <sup>3</sup>	417	1453	432	31	230	230	130	25 <sup>5</sup>
3750-3800	IP 21	1877	513 <sup>3</sup>	508	<sup>4</sup> 4	<sup>4</sup> 4	<sup>4</sup> 4	260	-	130	25 <sup>5</sup>	C
	IP 54	1877	513 <sup>3</sup>	531	<sup>4</sup> 4	<sup>4</sup> 4	<sup>4</sup> 4	260	-	130	25 <sup>5</sup>	C

<sup>1</sup> with ring bolts

<sup>2</sup> with ring bolts and base

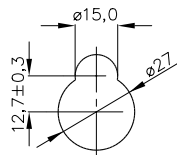
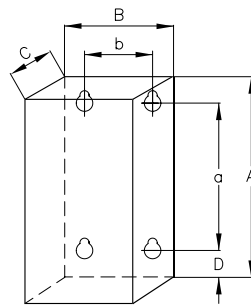
<sup>3</sup> with hinges

<sup>4</sup> to be placed on base

<sup>5</sup> only limited by the hinges on the sides.

Please note that the door opens to the left, while the option door opens to the right.

Type C cabinet



DANFOSS  
175HA291.10

