

The Siemens logo is displayed in a white rectangular box in the upper left corner of the page. The background of the entire page is a futuristic, digital-themed illustration of a factory floor. It features a curved conveyor belt with several cardboard boxes. Overlaid on this scene are various technical drawings and wireframe models of industrial machinery, including what appears to be a motor and a drive unit. The background is filled with a grid of binary code (0s and 1s) and glowing blue lines, suggesting a high-tech, data-driven environment.

SIEMENS

Motion Control Drives

SINAMICS Converters for Single-Axis Drives

SINAMICS G115D
Distributed Drive System

Order
overview
D 31.2 N

Edition
December
2020

[siemens.com/sinamics-g115d](https://www.siemens.com/sinamics-g115d)

Order overview

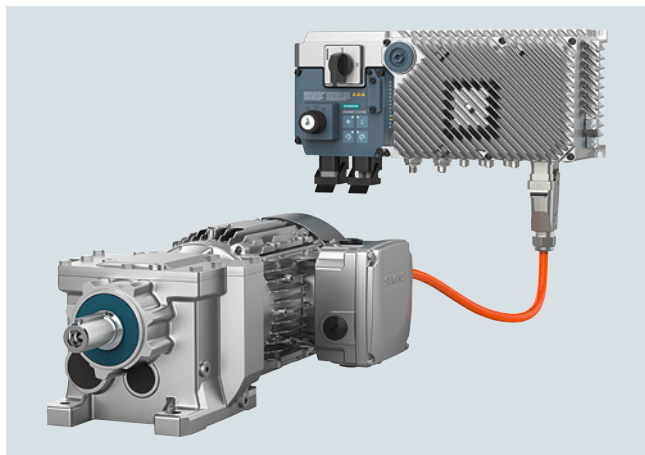
SINAMICS G115D distributed drive system

System overview

Overview

The SINAMICS G115D distributed drive system provides fully preconfigured and ready-to-connect solutions in a modular concept that includes the converter, motor and gear unit. The converter supports three-phase asynchronous motors with efficiency class IE3 or high-efficiency synchronous reluctance motors with efficiency class IE4. It meets all requirements of conveyor system applications – from simple speed control to sophisticated encoderless vector control. Integrated functions such as fast/slow speed switchover, Quick Stop and limit position disconnecter make the SINAMICS G115D particularly suitable for applications in conveyor systems. For applications that require safety technology, the SINAMICS G115D offers the Safety Integrated Function STO (Safe Torque Off), which can be implemented without additional external components. The SINAMICS G115D distributed drive system is available for wall mounting and for motor mounting.

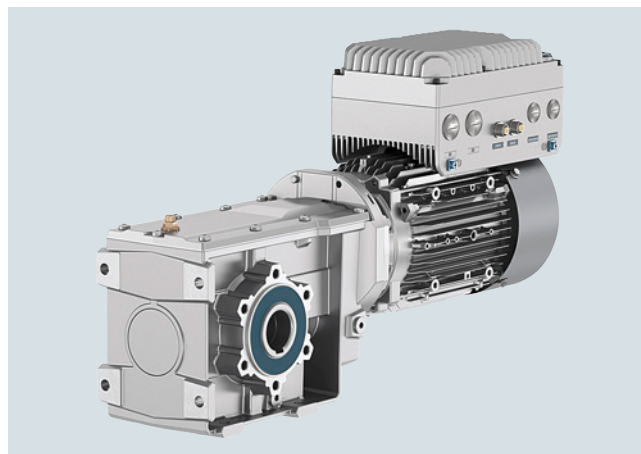
SINAMICS G115D distributed drive system, wall-mounted



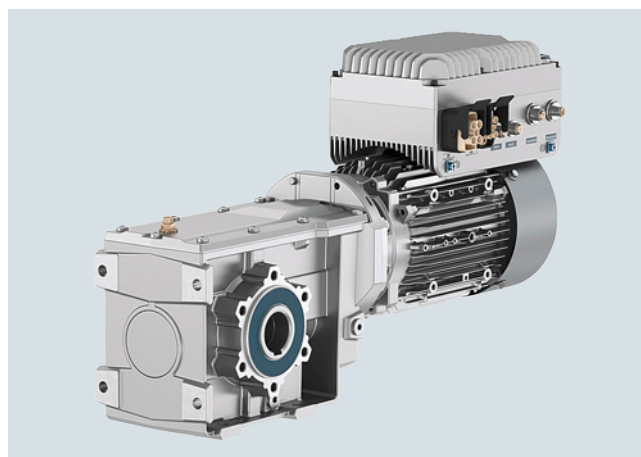
SINAMICS G115D distributed drive system, wall-mounted, PROFINET, version with plug-in connection, FSA, 1.5 kW

The wall-mounted converter with its different versions (frame sizes FSA to FSC) in a performance range from 0.37 kW to 7.5 kW is suitable for a large number of different applications. Thanks to the compact design with degree of protection IP65 (plug-in connection) or IP66 (cable gland), it can be seamlessly integrated into the system.

SINAMICS G115D distributed drive system, motor-mounted



SINAMICS G115D distributed drive system, motor-mounted, PROFINET, version with cable gland, FSA, 1.5 kW, SIMOGEAR motor LE 90, gearbox B49, hollow shaft



SINAMICS G115D distributed drive system, motor-mounted, PROFINET, version with plug-in connection, FSA, 1.5 kW, SIMOGEAR motor LE90, gearbox B49, hollow shaft

The motor-mounted converter with its different versions (frame sizes FSA and FSB) in a performance range from 0.37 kW to 4 kW is suitable for a large number of different applications. Thanks to the compact design with degree of protection up to IP65, it can be seamlessly integrated into the system.

Overview

Perfect combination with SIMATIC controllers and PROFINET

Integration via PROFINET communication with PROFIsafe, AS-Interface, EtherNet/IP into a higher-level SIMATIC control system is very easy thanks to full TIA Portal integration, which provides a tool as well as an operating and data management concept. In addition, an optional web server module is available with the web server module SINAMICS G120 Smart Access (SAM) – a WLAN-based web server solution for simple and fast wireless setup with tablets or smartphones during commissioning and for diagnostics.

The SINAMICS G115D distributed drive system is ready for digitalization. All operating data can be transferred to the MindSphere cloud solution. The MindSphere application "Analyze MyDrives" facilitates the process evaluation of operating data, with the possibility of adaptation to individual customer requirements. This simplifies the recording and evaluation of the operating conditions of the drive system.

Reasons for using the SINAMICS G115D distributed drive system

- User-friendly modular solution – pre-configured and ready for connection
- Versatile, robust and reliable system
- New design for quick and easy installation, cabling and commissioning
- The wall-mounted and motor-mounted variants use the same platform
- No control cabinet required, thanks to the installation on the machine less space required and lower cooling requirements
- Long cables between the converters and the motors can be avoided (thus less power loss, reduced interference emissions, and lower costs for shielded cables and additional filters)
- Supports asynchronous motors and high-efficiency synchronous reluctance motors according to efficiency class IE4
- Worldwide winding of the motor independent of the line voltage
- Temperature range from -30 °C to 55 °C (suitable for installation in deep-freeze applications)
- Integrated safety, STO (Safe Torque Off) via fail-safe digital input F-DI or PROFIsafe
- Perfectly prepared for digitalization thanks to various communication interfaces and integration of the AMD (Analyze MyDrives) application into the TIA tool environment
- Special properties for the intralogistics market (e.g. repair switches, local remote control, Safety Integrated, ready-to-use functions)

The family of distributed drive systems at Siemens

Siemens offers an innovative portfolio of frequency converters for optimal implementation in distributed drive solutions. The strengths of the individual members of the converter family allow easy adaptation to the most diverse application requirements:

- Identical connection systems
- User-friendly commissioning and configuration tools

Products from the family of distributed drives:

- SINAMICS G115D distributed drive system (wall and motor-mounted)
- SINAMICS G120D frequency converters
- SIMATIC ET 200pro FC-2 frequency converters
- SIRIUS M200D motor starters

Modularity

SINAMICS G115D is available as motor-mounted and wall-mounted version. This modular, distributed converter system with degree of protection IP65/66 comprises various functional units.

The most important components are:

- Electronic Module
- Wiring Module

The Electronic Module contains the frequency converter which controls and monitors the connected motor using various control modes. The input signals can be connected directly to the converter and initiate local reactions independently of each other, or they can be transmitted to the central control system via PROFINET / EtherNet/IP or AS-Interface for further processing within the framework of the overall system. The Electronic Module supplies the motor. State-of-the-art IGBT technology with pulse width modulation (PWM) is used for extremely reliable and flexible motor operation. Extensive protective functions provide a high degree of protection for the entire distributed drive system.

The Wiring Module provides ample space for wiring to connect to the main power supply, communication, and digital inputs and outputs. Different versions with cable glands and plug-in connections are available.

Order overview

SINAMICS G115D distributed drive system

System overview

Overview

Safety Integrated

The converters of the SINAMICS G115D distributed drive systems are already equipped with the Safety Integrated Function STO (Safe Torque Off), with certification according to IEC 61508 SIL 2 as well as EN ISO 13849-1 PL d and Category 3. This can be activated either via PROFIsafe communication protocol or via the fail-safe digital input F-DI.

Drive Technology Configurator (DT Configurator)

The Drive Technology Configurator (DT Configurator) helps you to configure the optimum drive technology products for a number of applications – starting with gear units, motors, converters as well as the associated options and components and ending with controllers, software licenses and connection systems.

The DT Configurator can be used on the Internet without requiring any installation. The DT Configurator can be found in the Siemens Industry Mall at the following address:

www.siemens.com/dt-configurator

SINAMICS Startdrive commissioning tool

SINAMICS Startdrive is a tool integrated into the TIA Portal for configuring, commissioning and diagnostics of the SINAMICS converter family. SINAMICS Startdrive (V16 and higher) can be used for implementing converter tasks with most of the SINAMICS G and SINAMICS S converter series. The commissioning tool has been optimized in terms of simplicity, ease of use, and consistent use of the benefits of the TIA Portal to provide a uniform working environment for PLC, HMI and drives.

The SINAMICS Startdrive Basic commissioning tool is available free on the internet at www.siemens.com/startdrive

Drive dimensioning of the SINAMICS G115D distributed drive system with the TIA Selection Tool

The SINAMICS G115D distributed drive system is easily configured with the TIA Selection Tool under the Drive Dimensioning plug-in. It provides support when selecting the hardware and firmware components necessary to implement a drive task. The plug-in encompasses the configuration of the entire drive system and allows the handling of individual drives.

- Intuitive user interface, menu-based operation and help
- Configuration of the SINAMICS G115D distributed drive system
- Adjustable load cycles and various mechanical systems integrated
- Interface to the TIA Portal and Industry Mall

The TIA Selection Tool is available for free on the Internet at www.siemens.com/tia-selection-tool-standalone

Note:

Integration of the SINAMICS G115D distributed drive system, motor-mounted, and online version available soon.

SIMARIS planning tools for plants with SINAMICS drives (available soon)

Electrical planning: Even easier with software!

Electrical planning for power distribution in non-residential and industrial buildings has never been more complex. To ensure you, as a specialist planner, have the best hand when it comes to electrical planning with SINAMICS drives, we provide support with the following efficient software tools:

- SIMARIS design for dimensioning and
- SIMARIS project for calculating the space requirements of the distribution boards.

Extended warranty

For SINAMICS G115D, Siemens offers an extended warranty of up to 4 years:

- 18-month standard warranty
- Optional extension via **Service Protect**
 - Free for the first 6 months after registering the product: <https://myregistration.siemens.com>
 - With costs for 1 or 2 additional years for wall-mounted and motor-mounted versions (complete system with converter and geared motor)

Additional information is available on the Internet at:

<https://support.industry.siemens.com/cs/ww/en/sc/4842>

More information

Compact Operating Instructions are supplied in hard copy form in German, English and Chinese with every SINAMICS G115D.

The latest technical documentation (catalogs, dimensional drawings, certificates, manuals and operating instructions as well as further technical specifications) are available on the Internet at:

www.siemens.com/sinamics-g115d/documentation

and the Drive Technology Configurator (DT Configurator):

www.siemens.com/sinamics-g115d/configuration

Selection and ordering data

SINAMICS G115D distributed converter, wall mounted - 380 ... 480 V 3 AC						SINAMICS G115D, wall-mounted Degree of protection IP65/IP66/UL Type 4X with integrated line filter class A according to EN 55011															
Rated power ¹⁾		Rated output current I_N ²⁾	Rated input current ³⁾	Frame size	Data position in Article No.																
400 V kW	480 V hp	at 400 V A	at 400 V A		1	2	3	4	5	6	7	8	9	10	11	12	13	14	15	16	
380 ... 480 V 3 AC · Rated pulse frequency 4 kHz · Input frequency 45 ... 66 Hz																					
0.37	0.5	1.3	1.23	FSA	6	S	L	3	5	2	-	-	X	-	0	-	3	A	0		
0.55	0.75	1.7	1.58	FSA	6	S	L	3	5	2	-	-	X	-	0	-	5	A	0		
0.75	1	2.2	1.99	FSA	6	S	L	3	5	2	-	-	X	-	0	-	7	A	0		
1.1	1.5	3.1	2.69	FSA	6	S	L	3	5	2	-	-	X	-	1	-	1	A	0		
1.5	2	4.1	3.48	FSA	6	S	L	3	5	2	-	-	X	-	1	-	5	A	0		
2.2	3	5.9	5.18	FSB	6	S	L	3	5	2	-	-	X	-	2	-	2	A	0		
3.0	4	7.7	6.76	FSB	6	S	L	3	5	2	-	-	X	-	3	-	0	A	0		
4.0	5	10.2	8.95	FSB	6	S	L	3	5	2	-	-	X	-	4	-	0	A	0		
5.5	7.5	13.2	11.88	FSC	6	S	L	3	5	2	-	-	X	-	5	-	5	A	0		
7.5	10	19	17.11	FSC	6	S	L	3	5	2	-	-	X	-	7	-	5	A	0		

Article No. supplements

Brake voltage

180 V DC *)
400 V AC

0
1

Operating options

Without operating option *)
Repair switch
Local remote control
Repair switch and local remote control

0
1
2
3

Connection type	Fieldbus communication	I/O	Motor	400 V AC	24 V DC	
Cable gland with daisy chain	without	Cable gland *)				A 0
		Cable gland		Power supply unit integrated		H 0
		Cable gland *)				A 2
	M12	M12 Cable gland				A 6
		Cable gland		Power supply unit integrated		H 2
		M12 Cable gland		Power supply unit integrated		H 6
Plug-in connection without daisy chain	M12	M12	Q8/0	Q4/2	7/8* ⁵⁾	B 0
					Power M12 ⁶⁾	B 4
				Quickon ⁴⁾	Power M12 ⁵⁾	C 0
				MQ15 ⁴⁾	Power M12 ⁵⁾	D 0
				Q4/2	Power supply unit integrated	K 0
				Quickon ⁴⁾	Power supply unit integrated	L 0
				MQ15 ⁴⁾	Power supply unit integrated	M 0
Plug-in connection with daisy chain	M12	M12	Q8/0	2 × Q4/2	2 × 7/8* ⁵⁾	E 0
					2 × Power M12 ⁶⁾	E 4
					Power supply unit integrated	N 0

Fieldbus communication

AS-Interface
Without fieldbus communication
PROFINET, EtherNet/IP

A
B
F

* If you select "Brake voltage 180 V DC" and "Without operating option" in combination with one of the connection types **A0**, **A2** or **E0**, the delivery time will change from "standard delivery time" to "delivery ex stock".

- 1) Rated power based on the rated output current I_N .
The rated output current I_N is based on the duty cycle for high overload (HO).
- 2) The rated output current I_N is based on the duty cycle for high overload (HO). These current values apply at 400 V and are specified on the rating plate of the converter.

- 3) The input current depends on the motor load and line impedance.
The input currents apply for a load at rated power for a line impedance corresponding to $u_K = 1\%$.
The current values are specified on the rating plate of the converter.
- 4) Not suitable for UL applications (FSA and FSB). Not available for FSC.
- 5) Plug-in connector at fieldbus communication AS-Interface not available.
- 6) Plug-in connector at fieldbus communication AS-Interface cannot be ordered.

Order overview

SINAMICS G115D distributed drive system

SIMOGEAR geared motors for SINAMICS G115D wall-mounted/motor-mounted · Structure of the Article No.

Selection and ordering data

SIMOGEAR geared motors for SINAMICS G115D wall-mounted/motor-mounted - Structure of the Article No.																				
SIMOGEAR 2KJ8 geared motors																				
Data position in Article No.																				
1	2	3	4	5	6	7	-	8	9	10	11	12	-	13	14	15	16	-	Z	
		2	K	J	8															
Article No. supplements																				
Gearbox type, gearbox designation																				
Helical gearbox E, 1-stage		0																		
Helical gearbox Z, 2-stage		1																		
Helical gearbox D, 3-stage		2																		
Parallel shaft gearbox FZ, 2-stage		3																		
Parallel shaft gearbox FD, 3-stage		4																		
Bevel gearbox B/K, 2/3-stage		5																		
Helical worm gearbox C, 2-stage		6																		
Gearbox size																				
See the Drive Technology Configurator (DT Configurator) www.siemens.com/sinamics-g115d/configuration		0	0																	
		1	...																	
		4	8																	
Motor type acc. to CE/UL/CCC/KC/EAC																				
Asynchronous motor									2											
Synchronous reluctance motor									4											
Motor shaft height																				
Shaft height 71										C										
Shaft height 80										E										
Shaft height 90										G										
Shaft height 100										J										
Shaft height 112										L										
Shaft height 132										N										
Motor rated power																				
Rated power 1																				
Rated power 2										A										
Rated power 3										B										
Motor temperature sensor																				
Without temperature sensor													0							
Pt1000 temperature sensor													1							
Motor brake																				
Without motor brake																				0
Motor brake																				1
Mounting type / converter rated power																				
Wall-mounted / rated power 1																				0
Wall-mounted / rated power 2																				1
Wall-mounted / rated power 3																				2
Motor-mounted / rated power 1																				3
Motor-mounted / rated power 2																				4
Motor-mounted / rated power 3																				5
Converter fieldbus communication																				
Geared motor for SINAMICS G115D wall-mounted																				A
Without fieldbus communication, cable gland																				B
Without fieldbus communication, plug-in connection																				C
AS-Interface, cable gland																				D
AS-Interface, plug-in connection																				E
PROFINET, Ethernet/IP, cable gland																				F
PROFINET, Ethernet/IP, plug-in connection																				G
Gearbox ratio																				
See the Drive Technology Configurator (DT Configurator) www.siemens.com/sinamics-g115d/configuration																				A
																				1
																				...
																				...
																				X
																				2

Selection and ordering data

SIMOGEAR geared motors for SINAMICS G115D wall-mounted/motor-mounted - Structure of the Article No.

SIMOGEAR 2KJ8 geared motors

Data position in Article No.

1 2 3 4 5 6 7 - 8 9 10 11 12 - 13 14 15 16 - Z

2 K J 8 . . . - - - Z

Options with -Z and order code

Mounting position

Standard

M1	D 0 1
M2	D 0 2
M3	D 0 3
M4	D 0 4
M5	D 0 5
M6	D 0 6
Permitted deviation from the mounting position	D 0 9

Universal mounting position output side A (DE)

M1-A	D 1 1
M2-A	D 1 2
M3-A	D 1 3
M4-A	D 1 4
M5-A	D 1 5
M6-A	D 1 6

Universal mounting position output side B (NDE)

M1-B	D 2 1
M2-B	D 2 2
M3-B	D 2 3
M4-B	D 2 4
M5-B	D 2 5
M6-B	D 2 6

Standard options for mandatory selection (e.g. the shaft designs) are displayed in the DT Configurator.

For commissioning in the TIA Portal, the selection of the mounting position (e.g. order code **D01**) is important for the specification of the direction of rotation of the output shaft.

Order overview

SINAMICS G115D distributed drive system

SIMOGEAR geared motors for SINAMICS G115D wall-mounted · Motor type asynchronous motors IE2/IE3

Selection and ordering data

SIMOGEAR geared motors for SINAMICS G115D wall-mounted · Motor type asynchronous motors IE2/IE3 → Configuration converter (see right page)

P_N
kW

T_N
Nm

Motor
Asynchronous motor

Efficiency class

cos φ

λ

Article No.
(Article No. supplement → see below)

Speed range 1:5 (300 ... 1500 rpm)

0.37	2.36	LE71MB4E	IE2	0.74	0.58	2KJ8 -2CF -0A -Z
0.55	3.50	LE80MA4E	IE2	0.76	0.64	2KJ8 -2EA -0A -Z
0.75	4.77	LE80MB4P	IE3	0.76	0.61	2KJ8 -2EG -0A -Z
1.1	7.00	LE90S4P	IE3	0.79	0.65	2KJ8 -2GB -0A -Z
1.5	9.55	LE90L4P	IE3 ¹⁾	0.82	0.68	2KJ8 -2GF -0A -Z
2.2	14.00	LE100LA4P	IE3	0.82	0.70	2KJ8 -2JB -0A -Z
3.0	19.10	LE100LB4P	IE3	0.83	0.70	2KJ8 -2JG -0A -Z
4.0	25.46	LE112MC4P	IE3	0.83	0.70	2KJ8 -2LB -0A -Z
5.5	35.00	LE132S4P	IE3	0.84	0.72	2KJ8 -2NA -0A -Z
7.5	47.75	LE132M4P	IE3	0.84	0.71	2KJ8 -2NF -0A -Z

Speed range 1:10 (300 ... 3000 rpm)

0.55	1.75	LE71MB4E	IE2	0.68	0.54	2KJ8 -2CF -1A -Z
0.75	2.36	LE80MA4E	IE2	0.70	0.57	2KJ8 -2EA -1A -Z
1.1	3.50	LE80MB4P	IE3	0.73	0.57	2KJ8 -2EG -1A -Z
1.5	4.77	LE90S4P	IE3	0.75	0.62	2KJ8 -2GB -1A -Z
2.2	7.00	LE90L4P	IE3	0.79	0.67	2KJ8 -2GF -1A -Z
3.0	9.55	LE100LA4P	IE3	0.80	0.69	2KJ8 -2JB -1A -Z
4.0	12.73	LE100LB4P	IE3	0.80	0.69	2KJ8 -2JG -1A -Z
5.5	17.50	LE112MC4P	IE3	0.81	0.70	2KJ8 -2LB -1A -Z
7.5	available soon	LE132S4P	IE3	available soon	available soon	2KJ8 -2NA -1A -Z

Speed range 1:8.7 (300 ... 2610 rpm)

0.64	2.36	LE71MB4E	IE2	0.67	0.54	2KJ8 -2CF -2A -Z
0.95	3.50	LE80MA4E	IE2	0.70	0.58	2KJ8 -2EA -2A -Z
1.30	4.77	LE80MB4P	IE3	0.73	0.60	2KJ8 -2EG -2A -Z
1.90	7.00	LE90S4P	IE3	0.76	0.63	2KJ8 -2GB -2A -Z
2.60	9.55	LE90L4P	IE3	0.79	0.67	2KJ8 -2GF -2A -Z
3.81	14.00	LE100LA4P	IE3	0.82	0.70	2KJ8 -2JB -2A -Z
5.20	19.10	LE100LB4P	IE3	0.81	0.68	2KJ8 -2JG -2A -Z
6.93	25.46	LE112MC4P	IE3	0.81	0.69	2KJ8 -2LB -2A -Z

Article No. supplements

Gearbox type

Helical gearbox E, 1-stage
 Helical gearbox Z, 2-stage
 Helical gearbox D, 3-stage
 Parallel shaft gearbox FZ, 2-stage
 Parallel shaft gearbox FD, 3-stage
 Bevel gearbox B/K, 2/3-stage
 Helical worm gearbox C, 2-stage

0
1
2
3
4
5
6

Gearbox size

See the Drive Technology Configurator (DT Configurator):
www.siemens.com/sinamics-g115d/configuration

0 0
1 ...
4 8

Temperature sensor

with Pt1000
 without

1
0

Brake

with
 without

1
0

Geared motor transmission ratio

See the Drive Technology Configurator (DT Configurator):
www.siemens.com/sinamics-g115d/configuration

A1
...
X2

Special versions

Necessary ordering data:

- Mounting position (order codes **D01** to **D26**) for the specification of the direction of rotation of the output shaft
- Configuration of the output shaft (order codes **H31** to **H67**)
- Configuration of the mounting type (order codes **H71** to **H76**)
- Configuration of the connection type of the converter (order codes **V01** to **V81**). Selection of the special versions, see the Drive Technology Configurator (DT Configurator): www.siemens.com/sinamics-g115d/configuration

Order codes

...+...+...+...

¹⁾ The asynchronous motor for the SIMOGEAR geared motors (frame size FS 90, 1.50 kW, designed for 50 Hz operation) fulfills the class IE3 according to IEC 60034-30-1: 2014.

SINAMICS G115D converters wall-mounted → (Configuration with motor type synchronous reluctance motors, see next double page)

P_N kW	hp	Rated input current A	Rated output current I_N A	Converter size (frame size)	Article No.
Speed range 1:5 (300 ... 1500 rpm)					
0.37	0.50	1.23	1.3	FSA	6SL352 - - X 0-3A 0
0.55	0.75	1.58	1.7	FSA	6SL352 - - X 0-5A 0
0.75	1.0	1.99	2.2	FSA	6SL352 - - X 0-7A 0
1.1	1.5	2.69	3.1	FSA	6SL352 - - X 1-1A 0
1.5	2.0	3.48	4.1	FSA	6SL352 - - X 1-5A 0
2.2	3.0	5.18	5.9	FSB	6SL352 - - X 2-2A 0
3.0	4.0	6.76	7.7	FSB	6SL352 - - X 3-0A 0
4.0	5.0	8.95	10.2	FSB	6SL352 - - X 4-0A 0
5.5	7.5	11.88	13.2	FSC	6SL352 - - X 5-5A 0
7.5	10	17.11	19	FSC	6SL352 - - X 7-5A 0
Speed range 1:10 (300 ... 3000 rpm)					
0.55	0.75	1.58	1.7	FSA	6SL352 - - X 0-5A 0
0.75	1.0	1.99	2.2	FSA	6SL352 - - X 0-7A 0
1.1	1.5	2.69	3.1	FSA	6SL352 - - X 1-1A 0
1.5	2.0	3.48	4.1	FSA	6SL352 - - X 1-5A 0
2.2	3.0	5.18	5.9	FSB	6SL352 - - X 2-2A 0
3.0	4.0	6.76	7.7	FSB	6SL352 - - X 3-0A 0
4.0	5.0	8.95	10.2	FSB	6SL352 - - X 4-0A 0
5.5	7.5	11.88	13.2	FSC	6SL352 - - X 5-5A 0
7.5	10	17.11	19	FSC	6SL352 - - X 7-5A 0
Speed range 1:8.7 (300 ... 2610 rpm)					
0.75	1.0	1.99	2.2	FSA	6SL352 - - X 0-7A 0
1.1	1.5	2.69	3.1	FSA	6SL352 - - X 1-1A 0
1.5	2.0	3.48	4.1	FSA	6SL352 - - X 1-5A 0
2.2	3.0	5.18	5.9	FSB	6SL352 - - X 2-2A 0
3.0	4.0	6.76	7.7	FSB	6SL352 - - X 3-0A 0
4.0	5.0	8.95	10.2	FSB	6SL352 - - X 4-0A 0
5.5	7.5	11.88	13.2	FSC	6SL352 - - X 5-5A 0
7.5	10	17.11	19	FSC	6SL352 - - X 7-5A 0

Article No. supplements
Brake voltage

180 V DC *)

400 V AC

Operating options

Without operating option *)

Repair switch

Local remote control

Repair switch and local remote control

Connection type	Fieldbus communication	I/O	Motor	400 V AC	24 V DC	
Cable gland with daisy chain	without		Cable gland *)		Power supply unit integrated	A 0
						H 0
						A 2
	M12		M12 Cable gland		Power supply unit integrated	A 6
						H 2
						H 6
Plug-in connection without daisy chain	M12		M12 Q8/0	Q4/2	7/8" ²⁾	B 0
					Power M12 ³⁾	B 4
					Quickon ¹⁾	C 0
					MQ15 ¹⁾	D 0
					Power supply unit integrated	K 0
					Quickon ¹⁾	L 0
					MQ15 ¹⁾	M 0
Plug-in connection with daisy chain	M12		M12 Q8/0	2 × Q4/2	2 × 7/8" *) ²⁾	E 0
					2 × Power M12 ³⁾	E 4
					Power supply unit integrated	N 0

Converter fieldbus communication

AS-Interface

Without fieldbus communication

PROFINET, EtherNet/IP

*) If you select "Brake voltage 180 V DC" and "Without operating option" in combination with one of the connection types **A0**, **A2** or **E0**, the delivery time will change from **standard delivery time** to **delivery ex stock**.

1) Not suitable for UL applications (FSA and FSB). Not available for FSC.

3) Plug-in connector with fieldbus communication AS-Interface cannot be ordered.

2) Plug-in connector with fieldbus communication AS-Interface not available.

Order overview

SINAMICS G115D distributed drive system

SIMOGEAR geared motors for SINAMICS G115D wall-mounted · Motor type synchronous reluctance motors IE4

Selection and ordering data

SIMOGEAR geared motors for SINAMICS G115D wall-mounted · Motor type synchronous reluctance motors IE4
 → Configuration converter (see right page)

P_N kW	T_N Nm	Motor Synchronous reluctance motor	Efficiency class	$\cos \phi$	Article No. (Article No. supplement → see below)
Speed range 1:5 (300 ... 1500 rpm)					
0.55	3.50	LE80MA4S	IE4	0.64	2KJ8 ■■■ -4EC ■■ -0A ■■ -Z
0.75	4.77	LE80MB4S	IE4	0.63	2KJ8 ■■■ -4EH ■■ -0A ■■ -Z
1.1	7.00	LE90S4S	IE4	0.66	2KJ8 ■■■ -4GC ■■ -0A ■■ -Z
1.5	9.55	LE90L4S	IE4	0.65	2KJ8 ■■■ -4GH ■■ -0A ■■ -Z
2.2	14.00	LE112MA4S	IE4	0.69	2KJ8 ■■■ -4LC ■■ -0A ■■ -Z
3.0	19.10	LE112MB4S	IE4	0.69	2KJ8 ■■■ -4LH ■■ -0A ■■ -Z
4.0	25.46	LE112MC4S	IE4	0.70	2KJ8 ■■■ -4LN ■■ -0A ■■ -Z
Speed range 1:10 (300 ... 3000 rpm)					
0.75	2.36	LE80MA4S	IE4	0.59	2KJ8 ■■■ -4EC ■■ -1A ■■ -Z
1.1	3.50	LE80MB4S	IE4	0.61	2KJ8 ■■■ -4EH ■■ -1A ■■ -Z
1.5	4.77	LE90S4S	IE4	0.62	2KJ8 ■■■ -4GC ■■ -1A ■■ -Z
2.2	7.00	LE90L4S	IE4	0.64	2KJ8 ■■■ -4GH ■■ -1A ■■ -Z
3.0	9.55	LE112MA4S	IE4	0.66	2KJ8 ■■■ -4LC ■■ -1A ■■ -Z
4.0	12.73	LE112MB4S	IE4	0.67	2KJ8 ■■■ -4LH ■■ -1A ■■ -Z
Speed range 1:8.7 (300 ... 2610 rpm)					
0.95	3.50	LE80MA4S	IE4	0.61	2KJ8 ■■■ -4EC ■■ -2A ■■ -Z
1.30	4.77	LE80MB4S	IE4	0.61	2KJ8 ■■■ -4EH ■■ -2A ■■ -Z
1.90	7.00	LE90S4S	IE4	0.64	2KJ8 ■■■ -4GC ■■ -2A ■■ -Z
2.60	9.55	LE90L4S	IE4	0.64	2KJ8 ■■■ -4GH ■■ -2A ■■ -Z
3.81	14.00	LE112MA4S	IE4	0.68	2KJ8 ■■■ -4LC ■■ -2A ■■ -Z

Article No. supplements

Gearbox type

Helical gearbox E, 1-stage
 Helical gearbox Z, 2-stage
 Helical gearbox D, 3-stage
 Parallel shaft gearbox FZ, 2-stage
 Parallel shaft gearbox FD, 3-stage
 Bevel gearbox B/K, 2/3-stage
 Helical worm gearbox C, 2-stage

0
1
2
3
4
5
6

Gearbox size

See the Drive Technology Configurator (DT Configurator):
www.siemens.com/sinamics-g115d/configuration

0 0
1 ...
4 8

Temperature sensor

with Pt1000
 without

1
0

Brake

with
 without

1
0

Geared motor transmission ratio

See the Drive Technology Configurator (DT Configurator):
www.siemens.com/sinamics-g115d/configuration

A1
...
X2

Special versions

Necessary ordering data:

- Mounting position (order codes **D01** to **D26**) for the specification of the direction of rotation of the output shaft
- Configuration of the output shaft (order codes **H31** to **H67**)
- Configuration of the mounting type (order codes **H71** to **H76**)
- Configuration of the connection type of the converter (order codes **V01** to **V81**). Selection of the special versions, see the Drive Technology Configurator (DT Configurator): www.siemens.com/sinamics-g115d/configuration

Order codes

...+...+...+...

SINAMICS G115D converters wall-mounted

→ (Configuration with motor type asynchronous motors, see preceding double page)

P_N kW	hp	Rated input current A	Rated output current I_N A	Converter size (frame size)	Article No.
Speed range 1:5 (300 ... 1500 rpm)					
0.55	0.75	1.58	1.7	FSA	6SL352 - X 0-5A 0
0.75	1.0	1.99	2.2	FSA	6SL352 - X 0-7A 0
1.1	1.5	2.69	3.1	FSA	6SL352 - X 1-1A 0
1.5	2.0	3.48	4.1	FSA	6SL352 - X 1-5A 0
2.2	3.0	5.18	5.9	FSB	6SL352 - X 2-2A 0
3.0	4.0	6.76	7.7	FSB	6SL352 - X 3-0A 0
4.0	5.0	8.95	10.2	FSB	6SL352 - X 4-0A 0
Speed range 1:10 (300 ... 3000 rpm)					
0.75	1.0	1.99	2.2	FSA	6SL352 - X 0-7A 0
1.1	1.5	2.69	3.1	FSA	6SL352 - X 1-1A 0
1.5	2.0	3.48	4.1	FSA	6SL352 - X 1-5A 0
2.2	3.0	5.18	5.9	FSB	6SL352 - X 2-2A 0
3.0	4.0	6.76	7.7	FSB	6SL352 - X 3-0A 0
4.0	5.0	8.95	10.2	FSB	6SL352 - X 4-0A 0
Speed range 1:8.7 (300 ... 2610 rpm)					
1.1	1.5	2.69	3.1	FSA	6SL352 - X 1-1A 0
1.5	2.0	3.48	4.1	FSA	6SL352 - X 1-5A 0
2.2	3.0	5.18	5.9	FSB	6SL352 - X 2-2A 0
3.0	4.0	6.76	7.7	FSB	6SL352 - X 3-0A 0
4.0	5.0	8.95	10.2	FSB	6SL352 - X 4-0A 0

Article No. supplements
Brake voltage

180 V DC *)

400 V AC

0
1
Operating options

Without operating option *)

Repair switch

Local remote control

Repair switch and local remote control

0
1
2
3

Connection type	Fieldbus communication	I/O	Motor	400 V AC	24 V DC	
Cable gland with daisy chain	without	Cable gland *)				A 0
		Cable gland			Power supply unit integrated	H 0
		Cable gland *)				A 2
	M12	M12 Cable gland				A 6
		Cable gland			Power supply unit integrated	H 2
		M12 Cable gland			Power supply unit integrated	H 6
Plug-in connection without daisy chain	M12	M12	Q8/0	Q4/2	7/8* 2)	B 0
					Power M12 3)	B 4
				Quickon 1)	Power M12 2)	C 0
				MQ15 1)	Power M12 2)	D 0
				Q4/2	Power supply unit integrated	K 0
				Quickon 1)	Power supply unit integrated	L 0
				MQ15 1)	Power supply unit integrated	M 0
Plug-in connection with daisy chain	M12	M12	Q8/0	2 × Q4/2	2 × 7/8* *) 2)	E 0
					2 × Power M12 3)	E 4
					Power supply unit integrated	N 0

Fieldbus communication

AS-Interface

Without fieldbus communication

PROFINET, EtherNet/IP

A
B
F
 * If you select "Brake voltage 180 V DC" and "Without operating option" in combination with one of the connection types **A0**, **A2** or **E0**, the delivery time will change from "standard delivery time" to "delivery ex stock".

1) Not suitable for UL applications (FSA and FSB). Not available for FSC.

2) Plug-in connector with fieldbus communication AS-Interface not available.

3) Plug-in connector with fieldbus communication AS-Interface cannot be ordered.

Order overview

SINAMICS G115D distributed drive system

SIMOGEAR geared motors with SINAMICS G115D motor-mounted · Motor type asynchronous motors IE2/IE3

Selection and ordering data

SIMOGEAR geared motors with SINAMICS G115D motor-mounted · Motor type asynchronous motors IE2/IE3

→ Configuration motor type synchronous reluctance motors (see right page)

P_N kW	T_N Nm	I_N A	$\cos \phi$ Nm	λ	Motor size Asyn- chronous motor	Efficiency class	Converter size (frame size)	Article No. (Article No. supplement → see below)
Speed range 1:5 (300 ... 1500 rpm)								
0.37	2.36	0.97	0.74	0.58	LE71MB4E	IE2	FSA	2KJ8 ■■■ -2CF ■■ -3 ■■■ -Z
0.55	3.50	1.29	0.76	0.64	LE80MA4E	IE2	FSA	2KJ8 ■■■ -2EA ■■ -3 ■■■ -Z
0.75	4.77	1.64	0.76	0.61	LE80MB4P	IE3	FSA	2KJ8 ■■■ -2EG ■■ -3 ■■■ -Z
1.1	7.00	2.30	0.79	0.65	LE90S4P	IE3	FSA	2KJ8 ■■■ -2GB ■■ -3 ■■■ -Z
1.5	9.55	3.00	0.82	0.68	LE90L4P	IE3	FSA	2KJ8 ■■■ -2GF ■■ -3 ■■■ -Z
2.2	14.00	4.66	0.82	0.70	LE100LA4P	IE3	FSA	2KJ8 ■■■ -2JB ■■ -3 ■■■ -Z
3.0	19.10	6.31	0.83	0.70	LE100LB4P	IE3	FSA	2KJ8 ■■■ -2JG ■■ -3 ■■■ -Z
4.0	25.00	8.09	0.83	0.70	LE112MC4P	IE3	FSA	2KJ8 ■■■ -2LB ■■ -3 ■■■ -Z
Speed range 1:10 (300 ... 3000 rpm)								
0.55	1.75	1.29	0.68	0.54	LE71MB4E	IE2	FSA	2KJ8 ■■■ -2CF ■■ -4 ■■■ -Z
0.75	2.36	1.67	0.70	0.57	LE80MA4E	IE2	FSA	2KJ8 ■■■ -2EA ■■ -4 ■■■ -Z
1.1	3.50	2.34	0.73	0.57	LE80MB4P	IE3	FSA	2KJ8 ■■■ -2EG ■■ -4 ■■■ -Z
1.5	4.77	2.93	0.75	0.62	LE90S4P	IE3	FSA	2KJ8 ■■■ -2GB ■■ -4 ■■■ -Z
2.2	7.00	4.14	0.79	0.67	LE90L4P	IE3	FSB	2KJ8 ■■■ -2GF ■■ -4 ■■■ -Z
3.0	9.55	6.47	0.80	0.69	LE100LA4P	IE3	FSB	2KJ8 ■■■ -2JB ■■ -4 ■■■ -Z
4.0	12.73	8.29	0.80	0.69	LE100LB4P	IE3	FSB	2KJ8 ■■■ -2JG ■■ -4 ■■■ -Z
Speed range 1:8.7 (300 ... 2610 rpm)								
0.64	2.36	1.49	0.67	0.54	LE71MB4E	IE2	FSA	2KJ8 ■■■ -2CF ■■ -5 ■■■ -Z
0.95	3.50	2.08	0.70	0.58	LE80MA4E	IE2	FSA	2KJ8 ■■■ -2EA ■■ -5 ■■■ -Z
1.30	4.77	2.73	0.73	0.60	LE80MB4P	IE3	FSA	2KJ8 ■■■ -2EG ■■ -5 ■■■ -Z
1.90	7.00	3.62	0.76	0.63	LE90S4P	IE3	FSB	2KJ8 ■■■ -2GB ■■ -5 ■■■ -Z
2.60	9.55	4.82	0.79	0.67	LE90L4P	IE3	FSB	2KJ8 ■■■ -2GF ■■ -5 ■■■ -Z
3.81	14.00	8.14	0.82	0.70	LE100LA4P	IE3	FSB	2KJ8 ■■■ -2JB ■■ -5 ■■■ -Z

Article No. supplements

Gearbox type

Helical gearbox E, 1-stage
Helical gearbox Z, 2-stage
Helical gearbox D, 3-stage
Parallel shaft gearbox FZ, 2-stage
Parallel shaft gearbox FD, 3-stage
Bevel gearbox B/K, 2/3-stage
Helical worm gearbox C, 2-stage

0
1
2
3
4
5
6

Gearbox size

See the Drive Technology Configurator (DT Configurator):
www.siemens.com/sinamics-g115d/configuration

0 0
1 ...
4 8

Temperature sensor

with Pt1000
without

1
0

Brake

with
without

1
0

Converter fieldbus communication

Without fieldbus communication, cable gland
Without fieldbus communication, plug-in connection
AS-Interface, cable gland
AS-Interface, plug-in connection
PROFINET, Ethernet/IP, cable gland
PROFINET, Ethernet/IP, plug-in connection

B
C
D
E
F
G

Geared motor transmission ratio

See the Drive Technology Configurator (DT Configurator):
www.siemens.com/sinamics-g115d/configuration

A1
...
X2

Special versions

Necessary ordering data:

- Mounting position (order codes **D01** to **D26**) for the specification of the direction of rotation of the output shaft
- Configuration of the output shaft (order codes **H31** to **H67**)
- Configuration of the mounting type (order codes **H71** to **H76**)
- Configuration of the connection type of the converter (order codes **V01** to **V81**). Selection of the special versions, see the Drive Technology Configurator (DT Configurator): www.siemens.com/sinamics-g115d/configuration

Order codes

...+...+...+...

SIMOGEAR geared motors with SINAMICS G115D motor-mounted · Motor type synchronous reluctance motors IE4

Selection and ordering data

SIMOGEAR geared motors with SINAMICS G115D motor-mounted · Motor type synchronous reluctance motors IE4 → Configuration motor type asynchronous motors (see left page)

P_N kW	T_N Nm	I_N A	$\cos \phi$ Nm	Motor size Synchronous reluctance motor	Efficiency class	Converter size (frame size)	Article No. (Article No. supplement → see below)
Speed range 1:5 (300 ... 1500 rpm)							
0.55	3.50	1.64	0.635	LE80MA4S	IE4	FSA	2KJ8 ■■■ -4EC ■■ -3 ■■■ -Z
0.75	4.77	2.02	0.634	LE80MB4S	IE4	FSA	2KJ8 ■■■ -4EH ■■ -3 ■■■ -Z
1.1	7.00	2.15	0.661	LE90S4S	IE4	FSA	2KJ8 ■■■ -4GC ■■ -3 ■■■ -Z
1.5	9.55	2.83	0.653	LE90L4S	IE4	FSA	2KJ8 ■■■ -4GH ■■ -3 ■■■ -Z
2.2	14.00	4.37	0.687	LE112MA4S	IE4	FSB	2KJ8 ■■■ -4LC ■■ -3 ■■■ -Z
3.0	19.10	5.80	0.691	LE112MB4S	IE4	FSB	2KJ8 ■■■ -4LH ■■ -3 ■■■ -Z
4.0	25.46	7.01	0.702	LE112MC4S	IE4	FSB	2KJ8 ■■■ -4LN ■■ -3 ■■■ -Z
Speed range 1:10 (300 ... 3000 rpm)							
0.75	2.36	1.77	0.586	LE80MA4S	IE4	FSA	2KJ8 ■■■ -4EC ■■ -4 ■■■ -Z
1.1	3.50	2.20	0.606	LE80MB4S	IE4	FSA	2KJ8 ■■■ -4EH ■■ -4 ■■■ -Z
1.5	4.77	2.73	0.622	LE90S4S	IE4	FSA	2KJ8 ■■■ -4GC ■■ -4 ■■■ -Z
2.2	7.00	4.24	0.635	LE90L4S	IE4	FSB	2KJ8 ■■■ -4GH ■■ -4 ■■■ -Z
3.0	9.55	5.13	0.662	LE112MA4S	IE4	FSB	2KJ8 ■■■ -4LC ■■ -4 ■■■ -Z
4.0	12.73	6.71	0.674	LE112MB4S	IE4	FSB	2KJ8 ■■■ -4LH ■■ -4 ■■■ -Z
Speed range 1:8.7 (300 ... 2610 rpm)							
0.95	3.50	1.94	0.611	LE80MA4S	IE4	FSA	2KJ8 ■■■ -4EC ■■ -5 ■■■ -Z
1.30	4.77	2.39	0.613	LE80MB4S	IE4	FSA	2KJ8 ■■■ -4EH ■■ -5 ■■■ -Z
1.91	7.00	3.37	0.644	LE90S4S	IE4	FSB	2KJ8 ■■■ -4GC ■■ -5 ■■■ -Z
2.60	9.55	4.87	0.637	LE90L4S	IE4	FSB	2KJ8 ■■■ -4GH ■■ -5 ■■■ -Z
3.81	14.00	6.32	0.676	LE112MA4S	IE4	FSB	2KJ8 ■■■ -4LC ■■ -5 ■■■ -Z

Article No. supplements

Gearbox type

Helical gearbox E, 1-stage
Helical gearbox Z, 2-stage
Helical gearbox D, 3-stage
Parallel shaft gearbox FZ, 2-stage
Parallel shaft gearbox FD, 3-stage
Bevel gearbox B/K, 2/3-stage
Helical worm gearbox C, 2-stage

0
1
2
3
4
5
6

Gearbox size

See the Drive Technology Configurator (DT Configurator):
www.siemens.com/sinamics-g115d/configuration

0 0
1 ...
4 8

Temperature sensor

with Pt1000
without

1
0

Brake

with
without

1
0

Converter fieldbus communication

Without fieldbus communication, cable gland
Without fieldbus communication, plug-in connection
AS-Interface, cable gland
AS-Interface, plug-in connection
PROFINET, Ethernet/IP, cable gland
PROFINET, Ethernet/IP, plug-in connection

B
C
D
E
F
G

Geared motor transmission ratio

See the Drive Technology Configurator (DT Configurator):
www.siemens.com/sinamics-g115d/configuration

A1
...
X2

Special versions

Necessary ordering data:

- Mounting position (order codes **D01** to **D26**) for the specification of the direction of rotation of the output shaft
- Configuration of the output shaft (order codes **H31** to **H67**)
- Configuration of the mounting type (order codes **H71** to **H76**)
- Configuration of the connection type of the converter (order codes **V01** to **V81**). Selection of the special versions, see the Drive Technology Configurator (DT Configurator): www.siemens.com/sinamics-g115d/configuration

Order codes

...+...+...+...

Order overview

SINAMICS G115D distributed drive system

SIMOGEAR geared motors with SINAMICS G115D motor mounted > Converter options

Options

Various connection types as well as connection sides can be selected for the converter fieldbus communications, as shown in the following tables.

Connection types	Fieldbus communication	I/O	400 V AC	24 V DC	Connection side	14th position of the Article No.		Additional identification code -Z with order code		
						2KJ8	■ . . . -Z			
Without fieldbus communication (I/O Control)										
Cable gland with daisy chain	without	Cable gland			left	2KJ8	B . . .	V01		
					right ²⁾	2KJ8	B . . .	V06		
Plug-in connection without daisy chain	without	M12	Q4/2	7/8"	left	2KJ8	C . . .	V10		
					right	2KJ8	C . . .	V11		
			Power M12	left	2KJ8	C . . .	V12			
				right	2KJ8	C . . .	V13			
		Quickon ¹⁾	Power M12	left	2KJ8	C . . .	V14			
				right	2KJ8	C . . .	V15			
		MQ15 ¹⁾	Power M12	left	2KJ8	C . . .	V16			
				right	2KJ8	C . . .	V17			
Plug-in connection with daisy chain	without	M12	2 x Q4/2	2 x 7/8"	left	2KJ8	C . . .	V20		
					right	2KJ8	C . . .	V21		
			2 x Power M12	left	2KJ8	C . . .	V22			
				right	2KJ8	C . . .	V23			
AS-Interface										
Cable gland with daisy chain	M12	Cable gland			left	2KJ8	D . . .	V02		
					right	2KJ8	D . . .	V03		
		M12			Cable gland	left	2KJ8	D . . .	V04	
						right	2KJ8	D . . .	V05	
Plug-in connection without daisy chain	M12	M12	Q4/2	-	left	2KJ8	E . . .	V10		
					right	2KJ8	E . . .	V11		
			Quickon ¹⁾	-	left	2KJ8	E . . .	V14		
					right	2KJ8	E . . .	V15		
		MQ15 ¹⁾	-	left	2KJ8	E . . .	V16			
				right	2KJ8	E . . .	V17			
		Plug-in connection with daisy chain	M12	M12	2 x Q4/2	-	left	2KJ8	E . . .	V20
							right	2KJ8	E . . .	V21

¹⁾ Not suitable for UL applications.

²⁾ The cable gland with daisy chain with connection side right (order code **V06**) can only be selected with integrated power supply unit for 24 V DC power supply (order code **V70**).

Options

Connection types	Fieldbus communication	I/O	400 V AC	24 V DC	Connection side	14th position of the Article No.	Additional identification code -Z with order code		
						2KJ8 -	-Z Order code		
PROFINET, Ethernet/IP									
Cable gland with daisy chain	M12	Cable gland			left	2KJ8 -	F . . . V02		
					right	2KJ8 -	F . . . V03		
	M12	Cable gland			left	2KJ8 -	F . . . V04		
					right	2KJ8 -	F . . . V05		
Plug-in connection without daisy chain	M12	M12	Q4/2	7/8"	left	2KJ8 -	G . . . V10		
					right	2KJ8 -	G . . . V11		
					Power M12	left	2KJ8 -	G . . . V12	
						right	2KJ8 -	G . . . V13	
			Quickon ¹⁾	Power M12	left	2KJ8 -	G . . . V14		
					right	2KJ8 -	G . . . V15		
					MQ15 ¹⁾	Power M12	left	2KJ8 -	G . . . V16
							right	2KJ8 -	G . . . V17
Plug-in connection with daisy chain	M12	M12	2 x Q4/2	2 x 7/8"	left	2KJ8 -	G . . . V20		
					right	2KJ8 -	G . . . V21		
			2 x Power M12		left	2KJ8 -	G . . . V22		
					right	2KJ8 -	G . . . V23		

Supplementary system components for the SINAMICS G115D distributed drive system, motor-mounted

Supplementary system components	Additional identification code -Z with order code
	2KJ8 -Z Order code
Integrated power supply unit for 24 V DC power supply	V70
SINAMICS SD memory card (512 MB empty)	V80
SINAMICS SD memory card (512 MB + firmware V4.7 SP13))	V81

¹⁾ Not suitable for UL applications.

Order overview

SINAMICS G115D distributed drive system

Clicking to the Industry Mall

6SL3255-0AA00-5AA0

Supplementary system components for SINAMICS G115D and spare parts for SINAMICS G115D

Selection and ordering data

Supplementary system components for SINAMICS G115D

Description	Article No.
Fuses	
<ul style="list-style-type: none"> 10 A for FSA 16 A for FSB 32 A for FSC 	3NA3803 3NA3805 3NA3812
External braking resistors ¹⁾ Continuous braking power	
<ul style="list-style-type: none"> 200 W for FSA 240 W for FSA 480 W for FSA 200 W for FSB 240 W for FSB 600 W for FSB 600 W for FSC 1200 W for FSC 	6SL3501-1BE32-0AA0 6SL3501-1BE32-4AA0 6SL3501-1BE34-8AA0 6SL3501-1BE32-0BA0 6SL3501-1BE32-4BA0 6SL3501-1BE36-0BA0 6SL3501-1BE36-0CA0 6SL3501-1BE41-2CA0
SINAMICS SD memory card	
<ul style="list-style-type: none"> 512 MB, empty 512 MB + firmware V4.7 SP13 	6SL3054-4AG00-2AA0 6SL3054-7TG00-2BA0
SINAMICS G120 Smart Access Web server module for wireless commissioning, operation and diagnostics of the converters using a smartphone, tablet, or laptop	6SL3255-0AA00-5AA0
Interface kit for web server module SINAMICS G120 Smart Access	6SL3555-0XA00-0AA0
PC converter connection kit 2 USB cable (3 m (9.84 ft) long)	6SL3255-0AA00-2CA0
Installation kit	
<ul style="list-style-type: none"> for SINAMICS G115D wall-mounted for SINAMICS G115D motor-mounted 	6SL3566-2GW00-0GA0 6SL3566-2GM00-0GA0
Cover kit for outputs 400 V AC and 24 V DC (7/8" and M12)	6SL3566-2GA00-0GA0

Connecting cables

An overview of all available accessories (e.g. plugs and cables) can be found under the following link:

www.siemens.com/distributeddrives-supplementaryproducts

PROFINET connecting cable	
IE connecting cable M12-180/M12-180 axial outlet	
<ul style="list-style-type: none"> 0.3 m (0.98 ft) 0.5 m (1.64 ft) 1 m (3.28 ft) 1.5 m (4.92 ft) 2 m (6.56 ft) 3 m (9.84 ft) 5 m (16.41 ft) 10 m (32.81 ft) 15 m (49 ft) 	6XV1870-8AE30 6XV1870-8AE50 6XV1870-8AH10 6XV1870-8AH15 6XV1870-8AH20 6XV1870-8AH30 6XV1870-8AH50 6XV1870-8AN10 6XV1870-8AN15
PROFINET connecting cable IE connecting cable M12-180/IE FC RJ45 plug 145 axial outlet	
<ul style="list-style-type: none"> 2 m (6.56 ft) 3 m (9.84 ft) 5 m (16.41 ft) 10 m (32.81 ft) 15 m (49 ft) 	6XV1871-5TH20 6XV1871-5TH30 6XV1871-5TH50 6XV1871-5TN10 6XV1871-5TN15
PROFINET connectors	
IE M12 plug PRO axial outlet	
<ul style="list-style-type: none"> 1 unit 8 units 	6GK1901-0DB20-6AA0 6GK1901-0DB20-6AA8
AS-Interface M12 branch	3RK1901-2NR20
Connecting cables/plug-in connectors for supplying the control electronics	
7/8" plug connector axial outlet	
<ul style="list-style-type: none"> Pin insert (OUT) Female contact insert (IN) 	6GK1905-0FA00 6GK1905-0FB00

Description	Article No.
Connecting cables/plug-in connectors for supplying the control electronics	
7/8" plug-in cable axial outlet	
<ul style="list-style-type: none"> 0.3 m (0.98 ft) 0.5 m (1.64 ft) 1 m (3.28 ft) 1.5 m (4.92 ft) 2 m (6.56 ft) 3 m (9.84 ft) 5 m (16.41 ft) 10 m (32.81 ft) 15 m (49 ft) 	6XV1822-5BE30 6XV1822-5BE50 6XV1822-5BH10 6XV1822-5BH15 6XV1822-5BH20 6XV1822-5BH30 6XV1822-5BH50 6XV1822-5BN10 6XV1822-5BN15
Connecting cables and plug-in connectors for digital inputs and outputs	3RK1902-4PB15-3AA0
M12 plug-in cable pre-assembled at both ends, axial outlet	
Y cable for distributed I/Os for dual connection of I/Os using single cables, 5-pole, M12, 200 mm (7.87 in)	6ES7194-6KA00-0XA0
Connecting cables pre-assembled at one end and connector sets to connect to the line supply	
Connecting cable pre-assembled at one end	
<ul style="list-style-type: none"> 1.5 m (4.92 ft) 5 m (16.41 ft) 	3RK1911-0DB13 3RK1911-0DB33
Connector set for energy supply	
<ul style="list-style-type: none"> 2.5 mm² 4 mm² 6 mm² 	3RK1911-2BE50 3RK1911-2BE10 3RK1911-2BE30
Quickon system connector for connections for 400 V AC	
<ul style="list-style-type: none"> Quickon nut Quickon connector 	6SL3566-4NA00-0GA0 6SL3566-4MA00-0GA0
Connector insert for power loop-through	
<ul style="list-style-type: none"> 2.5 mm² 4 mm² 	3RK1911-2BF50 3RK1911-2BF10
SINAMICS G115D training case SINAMICS G115D distributed drive system, motor-mounted, PROFINET, FSA, 0.37 kW, SIMOGEAR motor LE 71, gearbox Z29 incl. SIMATIC S7-1200F and MindConnect IoT 2040 gateway	6AG1067-1AA38-0AA0

Spare parts for SINAMICS G115D

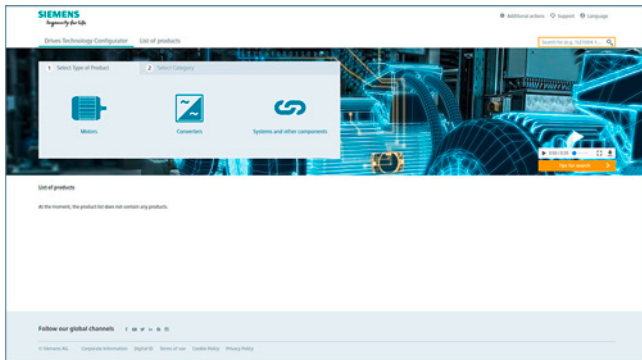
Description	Article No.
Electronic Modules	
<ul style="list-style-type: none"> FSA, 0.37 kW FSA, 0.55 kW FSA, 0.75 kW FSA, 1.1 kW FSA, 1.5 kW FSB, 2.2 kW FSB, 3 kW FSB, 4 kW FSC, 5.5 kW FSC, 7.5 kW 	6SL3500-0XE50-3- ■ AA0 6SL3500-0XE50-5- ■ AA0 6SL3500-0XE50-7- ■ AA0 6SL3500-0XE51-1- ■ AA0 6SL3500-0XE51-5- ■ AA0 6SL3500-0XE52-2- ■ AA0 6SL3500-0XE53-0- ■ AA0 6SL3500-0XE54-0- ■ AA0 6SL3500-0XE55-5- ■ AA0 6SL3500-0XE57-5- ■ AA0
Fieldbus communication	
<ul style="list-style-type: none"> AS-Interface Without fieldbus communication PROFINET, EtherNet/IP 	A B F
Spare parts kit	
<ul style="list-style-type: none"> for SINAMICS G115D wall-mounted for SINAMICS G115D motor-mounted 	6SL3500-0XK51-0AA0 6SL3500-0XK50-0AA0
Replacement fan for SINAMICS G115D wall-mounted	6SL3500-0XF51-0AA0

¹⁾ Available soon.

Overview

The Drive Technology Configurator (DT Configurator) helps you to configure the optimum drive technology products for your application – starting with gear units, motors, converters as well as the associated options and components and ending with controllers, software licenses and connection systems. Whether with little or detailed knowledge of products: preselected product groups, deliberate navigation through selection menus and direct product selection through entry of the article number support quick, efficient and convenient configuration.

In addition, comprehensive documentation comprising technical data sheets, 2D dimensional drawings/3D CAD models, operating instructions, certificates, etc. can be selected in the DT Configurator. Immediate ordering is possible by simply transferring a parts list to the shopping cart of the Industry Mall.



Drive Technology Configurator for efficient drive configuration with the following functions

- Quick and easy configuration of drive products and associated components – gear units, motors, converters, controllers, connection systems
- Configuration of drive systems for pumps, fans and compressor applications from 1 kW to 2.6 MW
- Retrievable documentation for configured products and components, such as
 - Data sheets in up to 9 languages in PDF or RTF format
 - 2D dimensional drawings/3D CAD models in various formats
 - Terminal box drawing and terminal connection diagram
 - Operating instructions
 - Certificates
 - Start-up calculation for SIMOTICS motors
 - EPLAN macros
- Support with retrofitting in conjunction with Spares On Web (www.siemens.com/sow)
- Ability to order products directly through the Siemens Industry Mall

Access to the Drive Technology Configurator

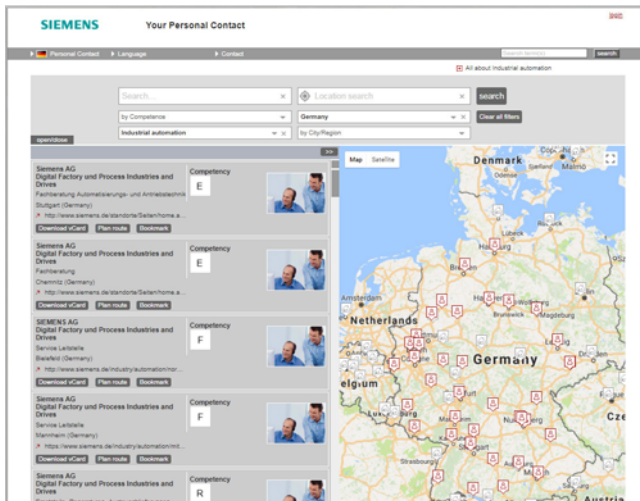
The Drive Technology Configurator can be called up without registration and without a login:

www.siemens.com/dt-configurator

Order overview

Partner

Partner at Siemens



At your service locally, around the globe for consulting, sales, training, service, support, spare parts on the entire portfolio of Digital Industries.

Your partner can be found in our Personal Contacts Database at: www.siemens.com/automation-contact

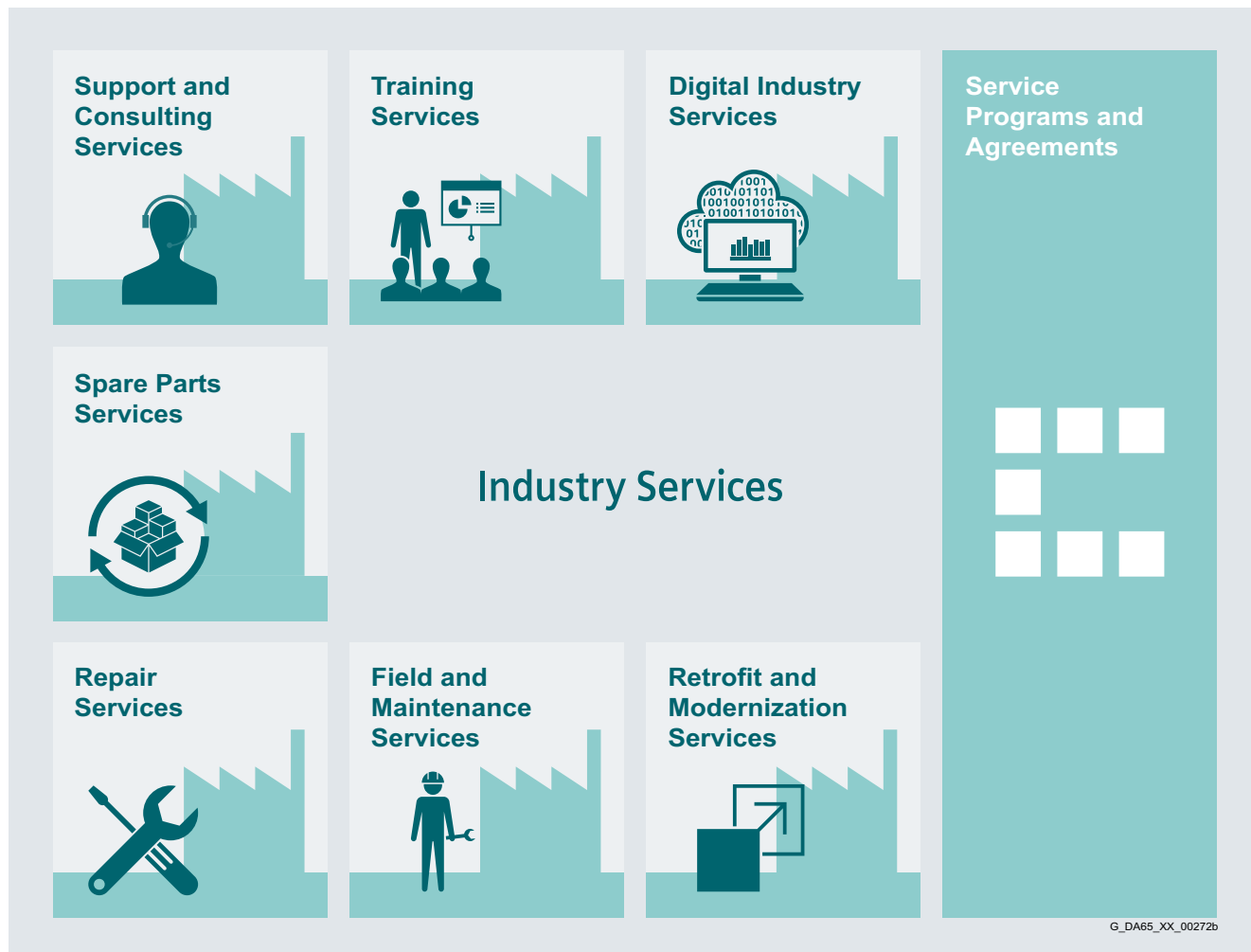
You start by selecting

- the required competence,
- products and branches,
- a country and a city

or by a

- location search or free text search.

Overview

**Keep your business running and shaping your digital future – with Industry Services**

Optimizing the productivity of your equipment and operations can be a challenge, especially with constantly changing market conditions. Working with our service experts makes it easier. We understand your industry's unique processes and provide the services needed so that you can better achieve your business goals.

You can count on us to maximize your uptime and minimize your downtime, increasing your operations' productivity and reliability. When your operations have to be changed quickly to meet a new demand or business opportunity, our services give you the flexibility to adapt. Of course, we take care that your production is protected against cyber threats. We assist in keeping your operations as energy and resource efficient as possible and reducing your total cost of ownership. As a trendsetter, we ensure that you can capitalize on the opportunities of digitalization and by applying data analytics to enhance decision making: You can be sure that your plant reaches its full potential and retains this over the longer lifespan.

You can rely on our highly dedicated team of engineers, technicians and specialists to deliver the services you need – safely, professionally and in compliance with all regulations. We are there for you, where you need us, when you need us.

www.siemens.com/industryservices

Order overview

Industry Services

Industry Services – Portfolio overview

Overview



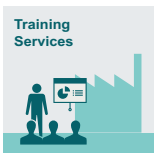
Digital Industry Services

Digital Industry Services make your industrial processes transparent to gain improvements in productivity, asset availability, and energy efficiency.

Production data is generated, filtered and translated with intelligent analytics to enhance decision-making.

This is done whilst taking data security into consideration and with continuous protection against cyber-attack threats.

www.siemens.com/global/en/products/services/industry/digital-industry-services.html



Training Services

From the basics and advanced to specialist skills, SITRAIN courses provide expertise right from the manufacturer – and encompass the entire spectrum of Siemens products and systems for the industry.

Worldwide, SITRAIN courses are available wherever you need a training course in more than 170 locations in over 60 countries.

<https://support.industry.siemens.com/cs/ww/en/sc/2226>



Support and Consulting Services

Industry Online Support site for comprehensive information, application examples, FAQs and support requests.

Technical and Engineering Support for advice and answers for all inquiries about functionality, handling, and fault clearance. The Service Card as prepaid support for value added services such as Priority Call Back or Extended Support offers the clear advantage of quick and easy purchasing.

Information & Consulting Services, e.g. SIMATIC System Audit; clarity about the state and service capability of your automation system or Lifecycle Information Services; transparency on the lifecycle of the products in your plants.

<https://support.industry.siemens.com/cs/ww/en/sc/2235>



Spare Parts

Spare Parts Services are available worldwide for smooth and fast supply of spare parts – and thus optimal plant availability. Genuine spare parts are available for up to ten years. Logistic experts take care of procurement, transport, custom clearance, storage and order management.

Reliable logistics processes ensure that components reach their destination as needed.

Since not all spare parts can be kept in stock at all times, Siemens offers a preventive measure for spare parts provisioning on the customer's premises with optimized **Spare Parts Packages** for individual products, custom-assembled drive components and entire integrated drive trains – including risk consulting.

Asset Optimization Services help you design a strategy for parts supply where your investment and carrying costs are reduced and the risk of obsolescence is avoided.

<https://support.industry.siemens.com/cs/ww/en/sc/2110>



Repair Services

Repair Services are offered on-site and in regional repair centers for fast restoration of faulty devices' functionality.

Also available are extended repair services, which include additional diagnostic and repair measures, as well as emergency services.

<https://support.industry.siemens.com/cs/ww/en/sc/2154>



Field and Maintenance Services

Siemens specialists are available globally to provide expert field and maintenance services, including commissioning, functional testing, preventive maintenance and fault clearance.

All services can be included in customized service agreements with defined reaction times or fixed maintenance intervals.

<https://support.industry.siemens.com/cs/ww/en/sc/2265>



Retrofit and Modernization Services

Provide a cost-effective solution for the expansion of entire plants, optimization of systems or upgrading existing products to the latest technology and software, e.g. migration services for automation systems.

Service experts support projects from planning through commissioning and, if desired over the entire extended lifespan, e.g. Retrofit for Integrated Drive Systems for an extended lifetime of your machines and plants.

<https://support.industry.siemens.com/cs/ww/en/sc/2286>



Service Programs and Agreements

A technical Service Program or Agreement enables you to easily bundle a wide range of services into a single annual or multi-year agreement.

You pick the services you need to match your unique requirements or fill gaps in your organization's maintenance capabilities.

Programs and agreements can be customized as KPI-based and/or performance-based contracts.

<https://support.industry.siemens.com/cs/ww/en/sc/2275>

Overview

Online Support – fast, intuitive, whenever you want, wherever you need



Web
support.industry.siemens.com

App

GET IT ON Google Play | Available on the App Store | Microsoft Store

Scan the QR code for information on our Online Support app.



FAQ / Application examples
Information about industrial products, programming and configuration as well as application examples

Technical information
Videos, documentation, manuals, updates, product notes, compatibility tool, certificates, planning data such as dimensional drawings, product data, 3D models

Forum
Exchange information and experience with other users and experts

Online Support for Siemens Industry Products

Siemens Industry and Online Support with some 1.7 million visitors per month is one of the most popular web services provided by Siemens. It is the central access point for comprehensive technical know-how about products, systems and services for automation and drives applications as well as for process industries.

In connection with the challenges and opportunities related to digitalization you can look forward to continued support with innovative offerings.

Order overview

Conditions of sale and delivery

1. General Provisions

By using this catalog you can purchase products (hardware, software and services) described therein from Siemens Aktiengesellschaft subject to the following Terms and Conditions of Sale and Delivery (hereinafter referred to as "T&C"). Please note that the scope, the quality and the conditions for supplies and services, including software products, by any Siemens entity having a registered office outside Germany, shall be subject exclusively to the General Terms and Conditions of the respective Siemens entity. The following T&C apply exclusively for orders placed with Siemens Aktiengesellschaft, Germany.

1.1 For customers with a seat or registered office in European Union

For customers with a seat or registered office in European Union, the following terms and conditions apply subordinate to T&C:

- for products, which include specific terms and conditions in the description text, these specific terms and conditions shall apply and subordinate thereto,
- for stand-alone software products and software products forming a part of a product or project, the "General License Conditions for Software Products for Automation and Drives for Customers with a Seat or registered Office in Germany"¹⁾ and/or
- for consulting services the "Allgemeine Geschäftsbedingungen für Beratungsleistungen der Division DF – Deutschland" (available only in German) and/or
- for other services, the „Supplementary Terms and Conditions for Services ("BL")"¹⁾ and/or
- for other supplies the "General Conditions for the Supply of Products and Services of the Electrical and Electronics Industry"¹⁾.

In case such supplies should contain Open Source Software, the conditions of which shall prevail over the "General Conditions for the Supply of Products and Services of the Electrical and Electronics Industry"¹⁾, a notice will be contained in the scope of delivery in which the applicable conditions for Open Source Software are specified. This shall apply mutatis mutandis for notices referring to other third party software components.

1.2 For customers with a seat or registered office outside European Union

For customers with a seat or registered office outside European Union, the following terms and conditions apply subordinate to T&C:

- for products, which include specific terms and conditions in the description text, these specific terms and conditions shall apply and subordinate thereto,
- for consulting services the "Standard Terms and Conditions for Consulting Services of the Division DF for Customers with a Seat or Registered Office Outside of Germany"¹⁾ and/or
- for other services the "International Terms & Conditions for Services"¹⁾ supplemented by "Software Licensing Conditions"¹⁾ and/or
- for other supplies of hard- and software the "International Terms & Conditions for Products"¹⁾ supplemented by "Software Licensing Conditions"¹⁾

1.3 For customers with master or framework agreement

To the extent our supplies and/or services offered are covered by an existing master or framework agreement, the terms and conditions of that agreement shall apply instead of T&C.

2. Prices

The prices are in € (Euro) ex point of delivery, exclusive of packaging.

The sales tax (value added tax) is not included in the prices. It shall be charged separately at the respective rate according to the applicable statutory legal regulations.

Prices are subject to change without prior notice. We will charge the prices valid at the time of delivery.

To compensate for variations in the price of raw materials (e.g. silver, copper, aluminum, lead, gold, dysprosium and neodym), surcharges are calculated on a daily basis using the so-called metal factor for products containing these raw materials.

A surcharge for the respective raw material is calculated as a supplement to the price of a product if the basic official price of the raw material in question is exceeded.

The metal factor of a product indicates the basic official price (for those raw materials concerned) as of which the surcharges on the price of the product are applied, and with what method of calculation.

An exact explanation of the metal factor can be downloaded at: https://mall.industry.siemens.com/legal/ww/en/terms_of_trade_en.pdf

To calculate the surcharge (except in the cases of dysprosium and neodym), the official price from the day prior to that on which the order was received or the release order was effected is used.

To calculate the surcharge applicable to dysprosium and neodym ("rare earths"), the corresponding three-month basic average price in the quarter prior to that in which the order was received or the release order was effected is used with a one-month buffer (details on the calculation can be found in the explanation of the metal factor).

3. Additional Terms and Conditions

The dimensions are in mm. In Germany, according to the German law on units in measuring technology, data in inches apply only to devices for export.

Illustrations are not binding.

Insofar as there are no remarks on the individual pages of this catalog – especially with regard to data, dimensions and weights given – these are subject to change without prior notice.

¹⁾ The text of the Terms and Conditions of Siemens AG can be downloaded at https://mall.industry.siemens.com/legal/ww/en/terms_of_trade_en.pdf

4. Export Regulations

We shall not be obligated to fulfill any agreement if such fulfillment is prevented by any impediments arising out of national or international foreign trade or customs requirements or any embargoes and/or other sanctions.

Export may be subject to license. We shall indicate in the delivery details whether licenses are required under German, European and US export lists.

Our products are controlled by the U.S. Government (when labeled with "ECCN" unequal "N") and authorized for export only to the country of ultimate destination for use by the ultimate consignee or end-user(s) herein identified. They may not be resold, transferred, or otherwise disposed of, to any other country or to any person other than the authorized ultimate consignee or end-user(s), either in their original form or after being incorporated into other items, without first obtaining approval from the U.S. Government or as otherwise authorized by U.S. law and regulations. Products labeled with "AL" unequal "N" are subject to European / national export authorization.

The export indications can be viewed in advance in the description of the respective goods on the Industry Mall, our online catalog system. Only the export labels "AL" and "ECCN" indicated on order confirmations, delivery notes and invoices are authoritative.

Products without label, with label "AL:N" / "ECCN:N", or label "AL:9X9999" / "ECCN: 9X9999" may require authorization from responsible authorities depending on the final end-use, or the destination.

If you transfer goods (hardware and/or software and/or technology as well as corresponding documentation, regardless of the mode of provision) delivered by us or works and services (including all kinds of technical support) performed by us to a third party worldwide, you shall comply with all applicable national and international (re-)export control regulations. In any event of such transfer of goods, works and services you shall comply with the (re-) export control regulations of the Federal Republic of Germany, of the European Union and of the United States of America.

Prior to any transfer of goods, works and services provided by us to a third party you shall in particular check and guarantee by appropriate measures that

- there will be no infringement of an embargo imposed by the European Union, by the United States of America and/ or by the United Nations by such transfer, by brokering of contracts concerning those goods, works and services or by provision of other economic resources in connection with those goods, works and services, also considering the limitations of domestic business and prohibitions of by-passing those embargoes;
- such goods, works and services are not intended for use in connection with armaments, nuclear technology or weapons, if and to the extent such use is subject to prohibition or authorization, unless required authorization is provided;
- the regulations of all applicable Sanctioned Party Lists of the European Union and the United States of America concerning the trading with entities, persons and organizations listed therein are considered.

If required to enable authorities or us to conduct export control checks, you, upon request by us, shall promptly provide us with all information pertaining to the particular end customer, the particular destination and the particular intended use of goods, works and services provided by us, as well as any export control restrictions existing.

You acknowledge that under the EU embargo regulations against Iran, Syria and Russia respectively the sale of certain listed goods and related services is subject to authorization by the competent export control authorities of the European Union. If (i) the goods or services ordered by you are destined for Iran, Syria or Russia, and (ii) the contract for our supplies and/or services is subject to prior authorization of the competent export control authorities of the European Union, the contract between you and us shall come into force in this respect only upon granting of such authorization.

The products listed in this catalog may be subject to European/German and/or US export regulations. Any export requiring approval is therefore subject to authorization by the relevant authorities.

Errors excepted and subject to change without prior notice.

Get more information

SINAMICS G115D

Distributed Drive System:

www.siemens.com/sinamics-g115d

The SINAMICS converter family:

www.siemens.com/sinamics

Motion Control Systems and Solutions for production machine and machine tool equipment:

www.siemens.com/motioncontrol

Local partners worldwide:

www.siemens.com/automation-contact

Published by
Siemens AG

Digital Industries
Motion Control
Postfach 31 80
91050 Erlangen, Germany

PDF (E86060-K5531-E121-A2-7600)
V6.MKKATA.GMC.100
KG 1220 24 En
Produced in Germany
© Siemens 2020

Subject to changes and errors. The information given in this document only contains general descriptions and/or performance features which may not always specifically reflect those described, or which may undergo modification in the course of further development of the products. The requested performance features are binding only when they are expressly agreed upon in the concluded contract.

All product designations may be trademarks or other rights of Siemens AG, its affiliated companies or other companies whose use by third parties for their own purposes could violate the rights of the respective owner.

Security information

Siemens provides products and solutions with industrial security functions that support the secure operation of plants, systems, machines and networks.

In order to protect plants, systems, machines and networks against cyber threats, it is necessary to implement – and continuously maintain – a holistic, state-of-the-art industrial security concept. Siemens' products and solutions constitute one element of such a concept.

Customers are responsible for preventing unauthorized access to their plants, systems, machines and networks. Such systems, machines and components should only be connected to an enterprise network or the internet if and to the extent such a connection is necessary and only when appropriate security measures (e.g. firewalls and/or network segmentation) are in place.

For additional information on industrial security measures that may be implemented, please visit

<https://www.siemens.com/industrialsecurity>

Siemens' products and solutions undergo continuous development to make them more secure. Siemens strongly recommends that product updates are applied as soon as they are available and that the latest product versions are used. Use of product versions that are no longer supported, and failure to apply the latest updates may increase customer's exposure to cyber threats.

To stay informed about product updates, subscribe to the Siemens Industrial Security RSS Feed under

<https://www.siemens.com/industrialsecurity>